



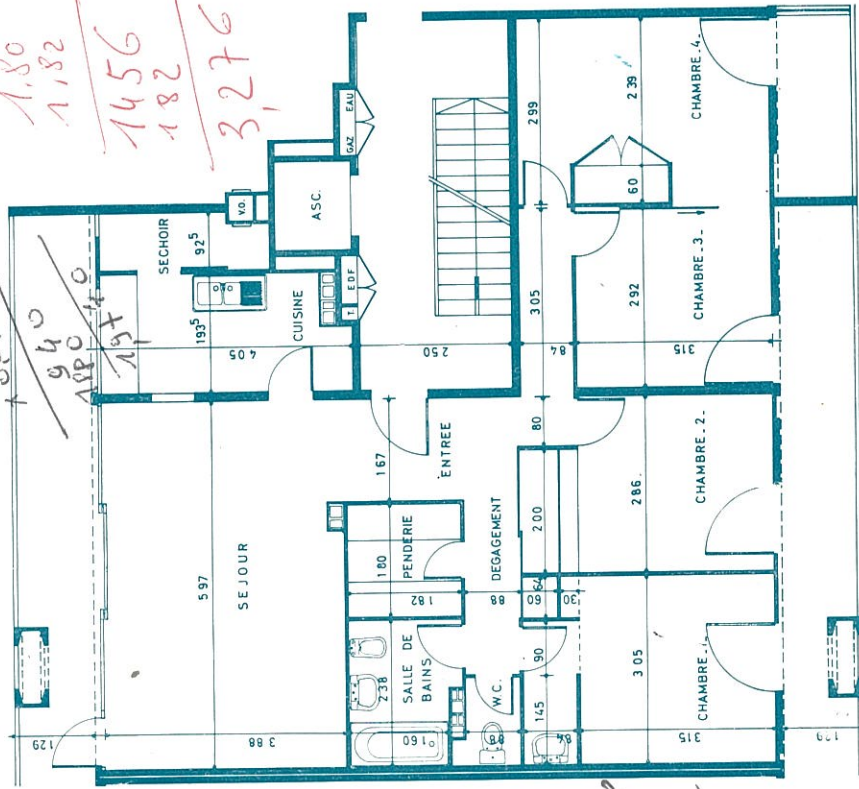
$$\begin{array}{r} 2640 \\ + 0160 \\ \hline 1584 \end{array}$$

$$\begin{array}{r} 1860 \\ + 270 \\ \hline 1584 \end{array}$$

3276 m<sup>2</sup>  
1584

$$\begin{array}{r} 180 \\ + 182 \\ \hline 1456 \\ + 182 \\ \hline 3276 \end{array}$$

$$\begin{array}{r} 180 \\ + 182 \\ \hline 1456 \\ + 182 \\ \hline 3276 \end{array}$$



135 150 ✓ en  
 1520 / étage  
 + Garage  

$$\begin{array}{r} 1520 \\ + 1520 \\ \hline 3040 \end{array}$$

APPARTEMENT DE 5 PIÈCES